



- Fully dimmable
- Reduces energy costs
- Improves animal welfare
- Advanced 8W LED system optimized for layers
- Dim-to-Red® technology enhances performance
- Patented spectral output for avian vision†
- Built For Your Barn® design

Products shown with recommended junction box.



**AgriShift®** lighting systems "shift" spectrum and intensity, meeting the individual needs of your animals¹.



**Dim-to-Red®** technology provides natural dawn and dusk simulation, reducing stress on your animals.



A **Built For Your Barn®** design uses techniques and materials that withstand harsh barn environment for years to come.

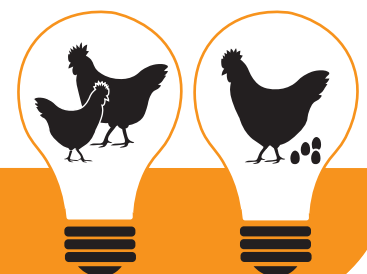
## Animal-Centric Lighting Systems

### Productivity Enhancement

The AgriShift® JLL makes it easy to improve the production and welfare of your bird by providing natural daylight simulation. The Dim-to-Red® technology used outputs a red spectrum which has been shown to decrease time to peak production by stimulating the release of two reproduction regulating hormones essential for sexual maturation and daily egg laying. Sunrise and sunset simulation eliminates the stress of switching lights on and off abruptly. This lessens overall stress in flock and lowers mortality, while improving immune response.

### The Science Behind the Technology

The AgriShift® JLL has a deep red saturated light output with an added blue and green spectrum, benefiting the vision of your animal. The enhanced red spectrum is the only spectrum which stimulates a bird's hypothalamic and pineal oscillators, helping maintain circadian rhythms and promoting sexual maturity.



## AgriShift® JLL Specifications

Nominal Power	8W (at full intensity)
Luminous Flux	575 lm human photopic 1120 lm poultry photopic
Light Output Equivalence	Up to 40W incandescent
Input Voltage	120 VAC / 60 Hz
Beam Angle	180° (Short) 200° (Tall)
Spectral Output	Poultry-specific red enhanced white
Operating Temperature	-20°C to 40°C / -4°F to 104°F
Dimmable Range	100% to 5%, dims-to-red hue
Dimmer Type	Phase Modulation or Amplitude Control*
Environmental Ratings	Suitable for wet locations, RoHs Compliant
	Conforms to UL Std. 1598
Safety	Certified to CAN/CSA C22.2 No. 250
Rated Life	50,000 hours

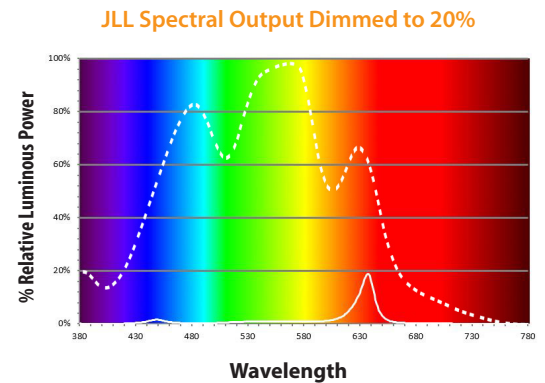
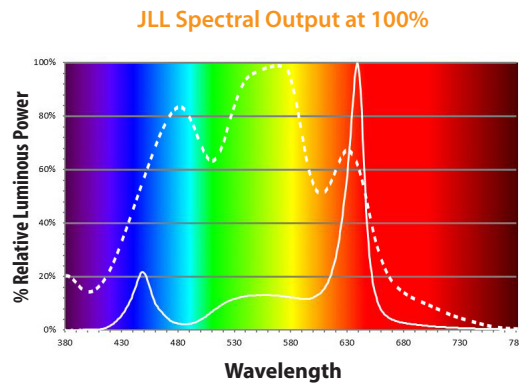
## Ordering Information

AgriShift® JLL 120V		SKU
AgriShift® JLL (Tall)	Junction Box Mount (JB)†	JLL-FSWR-JB-180T-008-120
AgriShift® JLL (Short)	Junction Box Mount (JB)†	JLL-FSWR-JB-180S-008-120
AgriShift® JLL Accessories		SKU
AgriShift® G Controller		ALC-G2S-UNAC-2-10
AgriShift® Master Controller 120V		30-014-00178-L123
AgriShift® Slave Dimmer 120V		30-014-00179-L123
AgriShift® Master Controller 240V		30-014-00180-L123
Junction Box		PRB57550GY
4 of the 5 KO openings are sealed, openings are 3/4"		
Junction Box Cover		PRB575GYKO

\* For optimum dimming performance use AgriShift® Controllers

† All units are packaged individually with attached integral gasket and 2 screws. Junction Box not included. See installation manual for proper installation.

The spectral output charts to the right show the AgriShift® JLL 120V at 100% (left) compared to it dimmed to 20% (right), while demonstrating how a chicken sees the light (dotted line).



## Complete Your AgriShift® Lighting System: AgriShift® Master Controller and Slave Dimmer

- Precise, consistent, incremental dimming
- Daylight and night time modes
- Fully automatic control or manual options
- Program up to 500 days divided into 20 lighting periods

The integrated AgriShift® Master Controller and Slave Dimmer provide smooth, programmable dimming to enable the full potential of any ONCE® AgriShift® fixture. They offer several advanced features that address the complex needs of today's modern farming facilities and can both be easily programmed with the accessible display and program buttons on the front panel.



Master Controller



Slave Dimmer

[www.once.group](http://www.once.group)

Once Inc. • 15255 23rd Ave N, Plymouth, MN 55447 • [info@once.group](mailto:info@once.group) • T +1 (763) 381-5621 • F +1 (763) 381-5698

**once®**